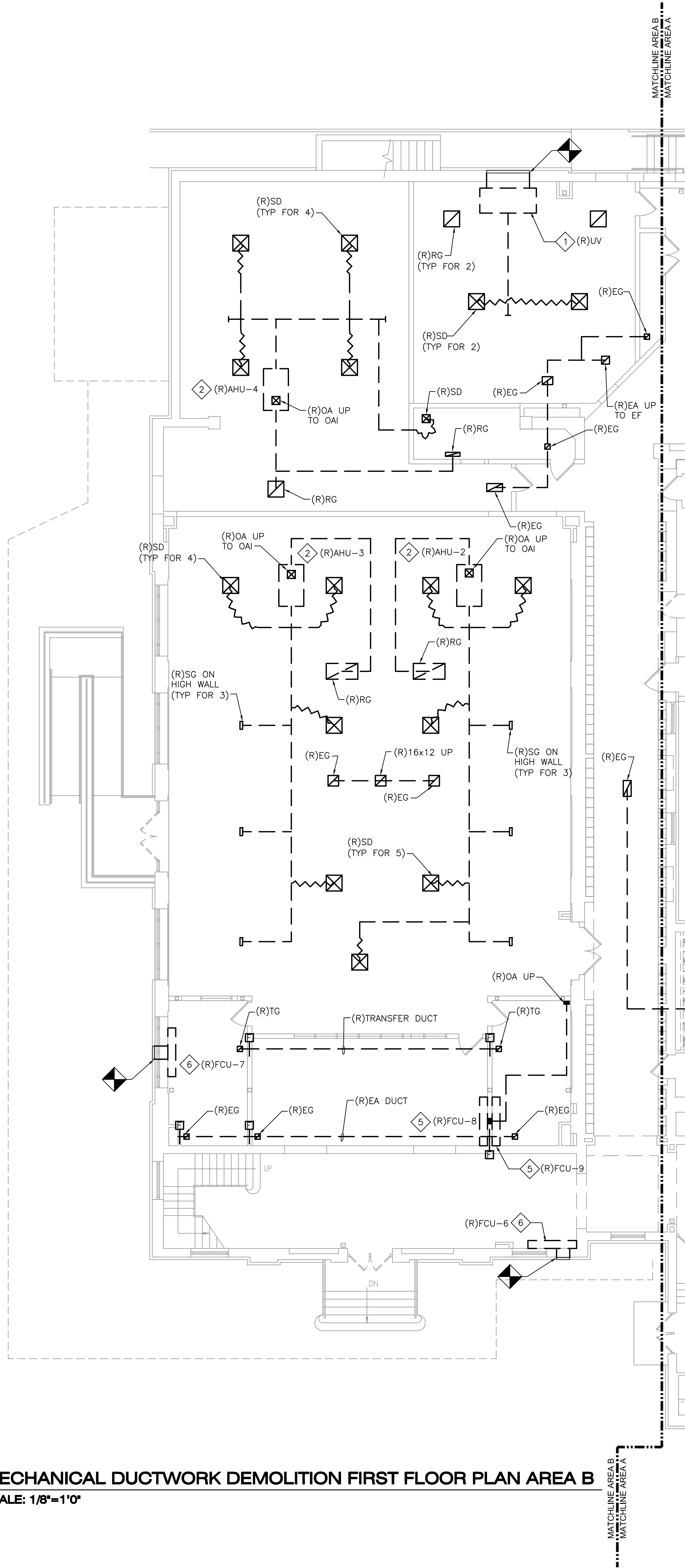
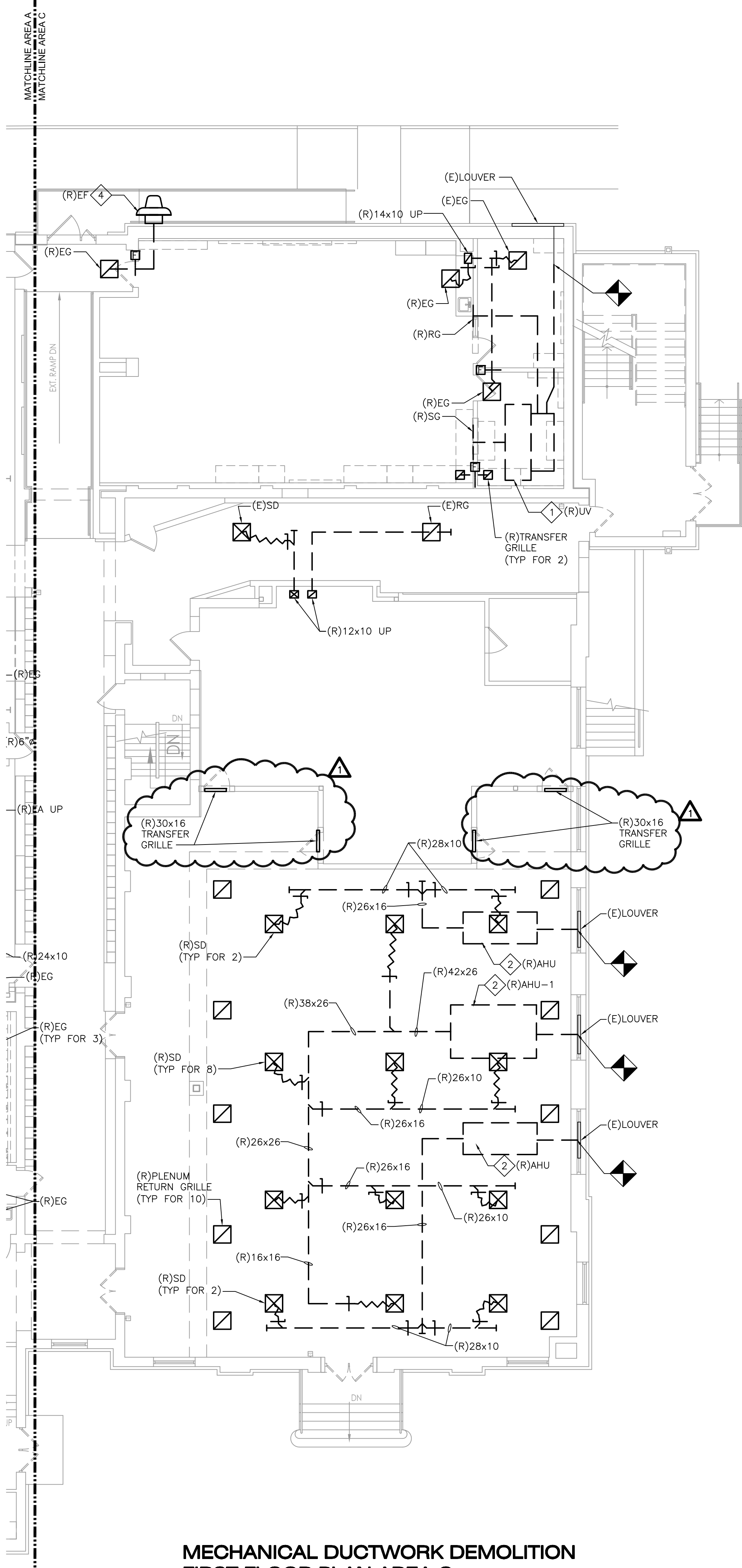


12/23/2025 11:13:25 AM
L:\2025\MECH\



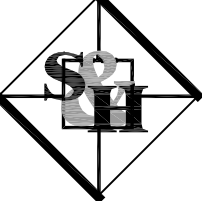
1 MECHANICAL DUCTWORK DEMOLITION FIRST FLOOR PLAN AREA B
SCALE: 1/8"=1'-0"



2 MECHANICAL DUCTWORK DEMOLITION FIRST FLOOR PLAN AREA C
SCALE: 1/8"=1'-0"

- DEMOLITION KEY NOTES:**
- 1 REMOVE UNIT VENTILATOR IN ITS ENTIRETY, INCLUDING BUT NOT LIMITED TO, ASSOCIATED HOT WATER SUPPLY AND RETURN PIPING, CHILLED WATER SUPPLY AND RETURN PIPING, WALL BOX, WIRING AND CONTROLS. BLANK OFF EXISTING LOUVER WITH DOUBLE SIDED 1" INSULATED SHEET METAL PANEL AND ABANDON.
 - 2 REMOVE AIR HANDLING UNIT IN ITS ENTIRETY, INCLUDING BUT NOT LIMITED TO, ASSOCIATED HOT WATER SUPPLY AND RETURN PIPING, CHILLED WATER SUPPLY AND RETURN PIPING, SUPPLY AND RETURN DUCTWORK, GRILLES, DIFFUSERS, AIR DUCT ACCESSORIES, INSULATION, HANGERS, SUPPORTS, CONTROLS AND WIRING. BLANK OFF EXISTING LOUVER WITH DOUBLE SIDED 1" INSULATED SHEET METAL PANEL AND ABANDON.
 - 3 REMOVE AND SALVAGE EXISTING 40x8 SUPPLY GRILLE. GRILLE NECK TO BE EXTENDED AND GRILLE RELOCATED ON NEW WALL.
 - 4 REMOVE EXHAUST FAN IN ITS ENTIRETY, INCLUDING BUT NOT LIMITED TO, DUCTWORK, GRILLES HANGERS, SUPPORTS, CONTROLS AND WIRING. CAP OPENING WITH INSULATED METAL PLATE WEATHERTIGHT AND PAINT IN COLOR AS SELECTED BY ARCHITECT.
 - 5 REMOVE FAN COIL UNIT IN ITS ENTIRETY, INCLUDING BUT NOT LIMITED TO, ASSOCIATED HOT WATER SUPPLY AND RETURN PIPING, CHILLED WATER SUPPLY AND RETURN PIPING, OUTSIDE AIR DUCTWORK, INSULATION, HANGERS, SUPPORTS, CONTROLS AND WIRING.
 - 6 REMOVE FAN COIL UNIT IN ITS ENTIRETY, INCLUDING BUT NOT LIMITED TO, ASSOCIATED HOT WATER SUPPLY AND RETURN PIPING, CHILLED WATER SUPPLY AND RETURN PIPING, INSULATION, HANGERS, SUPPORTS, CONTROLS AND WIRING. BLANK OFF EXISTING LOUVER WITH DOUBLE SIDED 1" INSULATED SHEET METAL PANEL AND ABANDON.
 - 7 REMOVE HOT WATER DUCT HEATING COIL INCLUDING ALL ASSOCIATED HOT WATER SUPPLY & RETURN PIPING, INSULATION, HANGERS, VALVES, SPECIALTIES, CONTROLS AND WIRING. AFTER REMOVAL OF COIL, CONNECT/PATCH EXISTING DUCTWORK SO THAT THE DUCT IS CONTINUOUS & AIRTIGHT. PROVIDE NEW INSULATION AS NEEDED TO ENSURE EXISTING DUCT IS FULLY INSULATED. FIELD VERIFY EXISTING DUCT SIZE.

NOTES:
1. REFER TO DRAWING M-001 FOR LEGEND, ABBREVIATIONS, AND GENERAL NOTES.

M/E/P Engineer:

SCHILLER AND HERSH ASSOCIATES, INC.
Consulting M/E/P Engineers
636 Skippack Pike, Suite 200
Blue Bell, PA 19422
Certificate of Authorization: 24GA28014000
S&H JOB #2528A

RICHARD L. DELP, PE
NEW JERSEY PROFESSIONAL
ENGINEER
LICENSE NO.: GE45368

KEY PLAN:

ANNEX

No.	Date	Description
1	12/23/25	ADDENDUM 1
	12/08/25	OUT TO BID
	12/03/25	DCA Submission

DiGroupArchitecture
ARCHITECTURE FOR CHANGE
15 Bethany Street • New Brunswick, NJ 08901 • T:732.246.6242
2450 W Hunting Park Ave., Bldg 9 • Philadelphia, PA 19129-1302 • T:215.634.3600

Richard D. Alderico, AIA
NJ RA A1 15023, NY RA 027416, PA RA 405474

DO NOT SCALE. DRAWING MAY BE PRINTED AT REDUCED SCALE. CONSULT WITH ARCHITECT FOR DIMENSIONS.

Client:
Rowan University
201 Mullica Hill Rd.
Glassboro, NJ 08028

Project:
Alterations to Facility Located at 202 Delsea Drive
BLOCK 26 / LOT 412
202 Delsea Dr.
Glassboro, NJ 08028

Drawing Information:
Project No: 25.024
Date: TMW
Drawn By: TMW
Checked By: RLD

Sheet Name:
DUCTWORK DEMO 1ST FLR

Sheet No:
MD-101B
Sheet 0 of 000